

# ChronoTrack D-Tag Instructions



## STEP 1

Remove tag from bib



## STEP 2

Separate D-Tag from directions by tearing at "Tear Along Here"



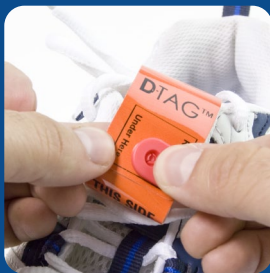
## STEP 3

Form CIRCLE around lace where laces cross



## STEP 4

Join ends of D-Tag using adhesive tab



## STEP 5

IF PROVIDED, insert clip into hole and snap together



## STEP 6

Rotate D-Tag correct side up